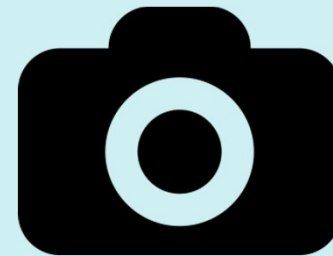
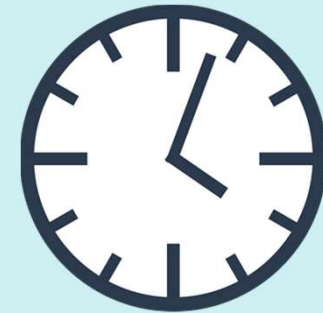


involve



# Camden Climate Panel - Session 2

# HOUSEKEEPING



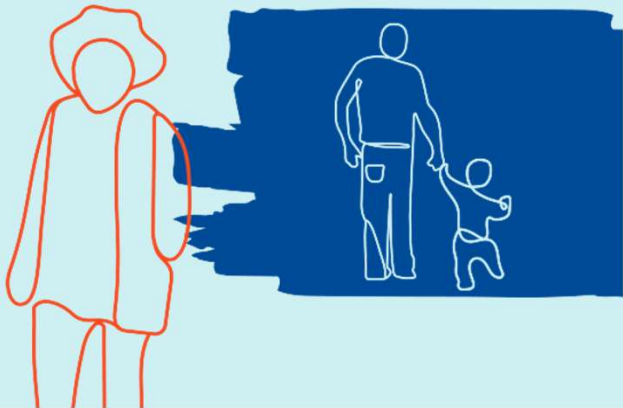
# AGENDA

- Introduction and welcome
- Connection Exercise
- Presentation - What is climate resilience?
- Presentation - Camden's Climate Resilience plan
- Table discussions
- Wrap up and close - 8:30pm



# Who is in the room

- Involve Team
- Camden Team
- You!



# What has happened since Session One?

- Additional Panel Member recruitment
- Microsite updated
- Video overview of Session 1
- Panel Member Gallery
- Poll Question

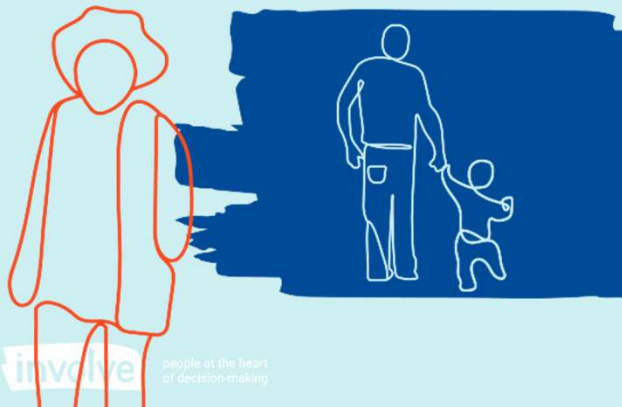


# “Please share a few words or short statements about what climate resilience means to you”



Climate resilience means proactively adapting to the challenges of climate change. It involves developing strategies to mitigate risks and build a sustainable future.

Being prepared, able to withstand events.  
Identifying risks & weaknesses in advance & designing them out, where possible.



“Please share a few words or short statements about what climate resilience means to you”



Means my family and community being able to survive the impacts of climate change - and by preparing for the impacts, create a fairer & safer environment for everyone

If you care and look after the planet, the planet will care and look after you.

Recycling, reducing energy usage, insulation, educating consumers





# “Please share a few words or short statements about what climate resilience means to you”



Climate resilience in general is the ability to recover from, or to mitigate vulnerability to, climate-related shocks such as floods and droughts.

Preparing for increasingly hot weather and its effects upon people, places and things. These include having minute water refill points, places where people can stay cool, preferably w/working loos, etc.





# Connection Exercise

- What effects of climate change have you seen or experienced in your home or community in the last 12 months?
- What have you seen or noticed in the borough that helps manage the effects of climate change?



# Conversation Guidelines

## Guidelines suggested by Panel

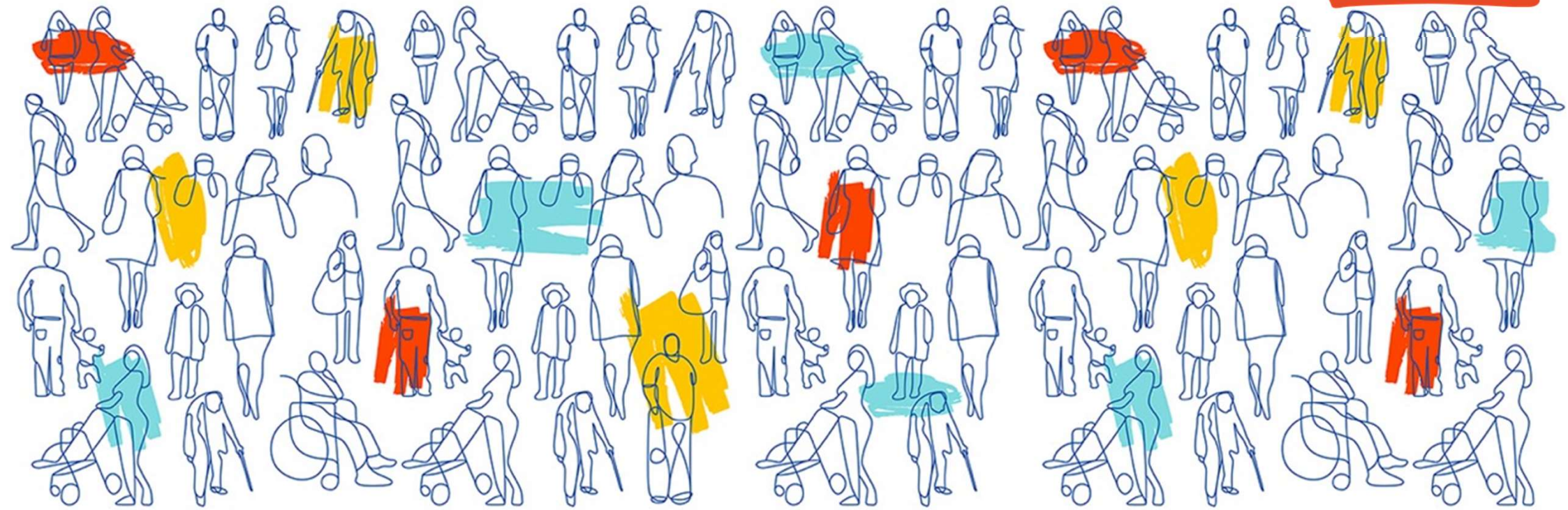
### Members

- Less is more, be comfortable with silence
- Ensure everyone has space to speak
- Feeding back to the wider group is a shared responsibility
- There are lots of different ways to contribute to a discussion, only do what you feel comfortable doing
- What gets said in the room, stays in the room, unless we agree otherwise
- If you committed, attend the sessions and be present
- Timekeeping!

## Guidelines suggested by Involve

- Just one conversation at a time
- Only share what you feel comfortable sharing
- No such thing as a silly question
- Be mindful that we all communicate and take in information at different paces
- Background conversations to the foreground
- Step forward, step back
- Be respectful of others and their opinions
- Disagree, but please don't be disagreeable

involve



# Jackson Bylett - What is Climate Resilience?



# What is Climate Resilience?

Camden Climate Citizen Panel



Jackson Bylett, Climate Programme Manager

# Overview – 4 key questions

1. How do you define climate resilience?
2. How does this align with what we discussed last time?
3. What ways are we at risk from climate change in Camden?
4. How do we prepare for these climate hazards?

# What is Climate Resilience?

The IPCC Sixth Assessment Synthesis Report (2023) set out that *climate change impacts are here...*

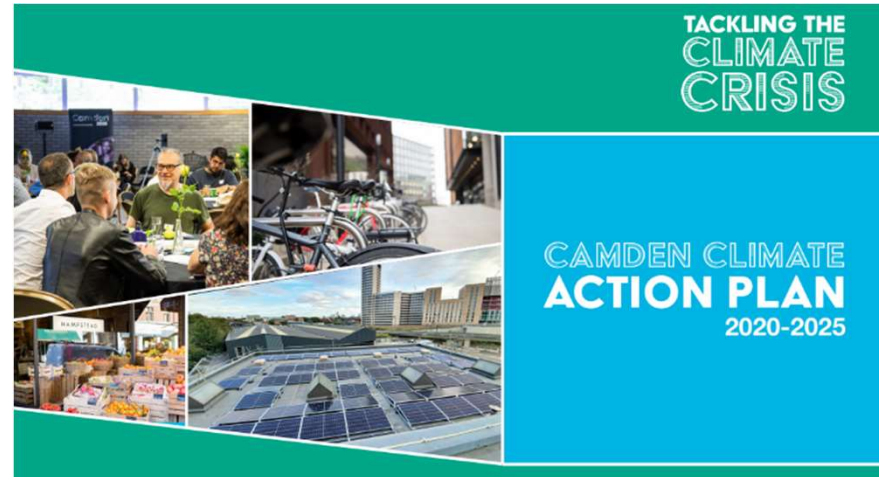
**Climate resilience** is the ability of social, economic, and ecological systems to cope with hazardous events, trends, or disturbances related to the climate (e.g. flooding or heatwaves).

**Climate adaptation** refers to the process of making changes to prepare for and negate the effects of climate change, thereby reducing the vulnerability of communities.



# How does this align with what we discussed last time?

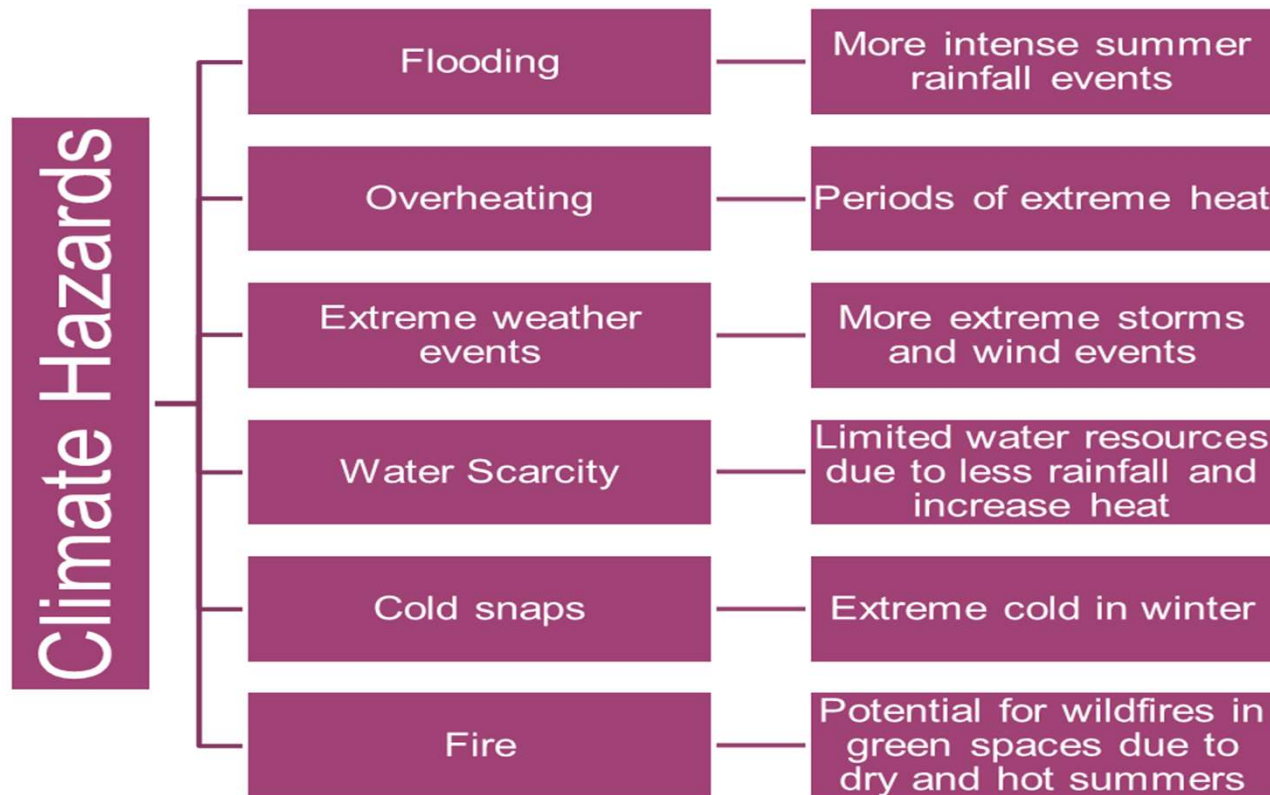
- The Climate Action Plan outlines how organisations will stop their net contribution of greenhouse gas emission to the atmosphere to try and limit global warming and climate change.
- Working to improve climate resilience and adaptation acknowledges that climate change is upon us and until global GHG reduction targets are met, climate hazards are likely to become more frequent and significant.



***Action 2.2.9 (Places) – By 2023, in conjunction with other London boroughs, publish a climate adaptation and resilience strategy***



# What ways are we at risk from climate change in Camden?



Based on all future climate data, we are expecting each hazard to intensify, leading to impacts increasing in frequency and magnitude.

# Climate Change in Camden

**Camden street turns into two foot 'river' and floods homes after burst water main**

**Heatwave travel disruption: Train speed limits amid track buckling and increase in car breakdowns**

**Shops, businesses and streets flooded by torrential rain storm**

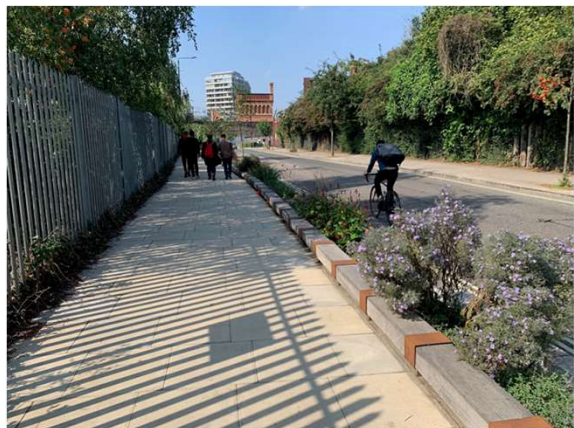
**Schools close early and barbecues in parks banned amid heatwave**

**Euston Road one of the most polluted places in Britain, according to latest air pollution figures**

---



# How do we prepare for climate hazards?



**BEST WAYS TO KEEP YOUR HOME COOL**

- 1 Close the curtains
- 2 Ditch the washing
- 3 Shut the windows
- 4 Use fan strategically
- 5 Unplug devices
- 6 Invest in houseplants



# Recap – 4 key questions

1. How do you define climate resilience?
2. How does this align with what we discussed last time?
3. What ways are we at risk from climate change in Camden?
4. How do we prepare for these climate hazards?





**QUESTIONS?**

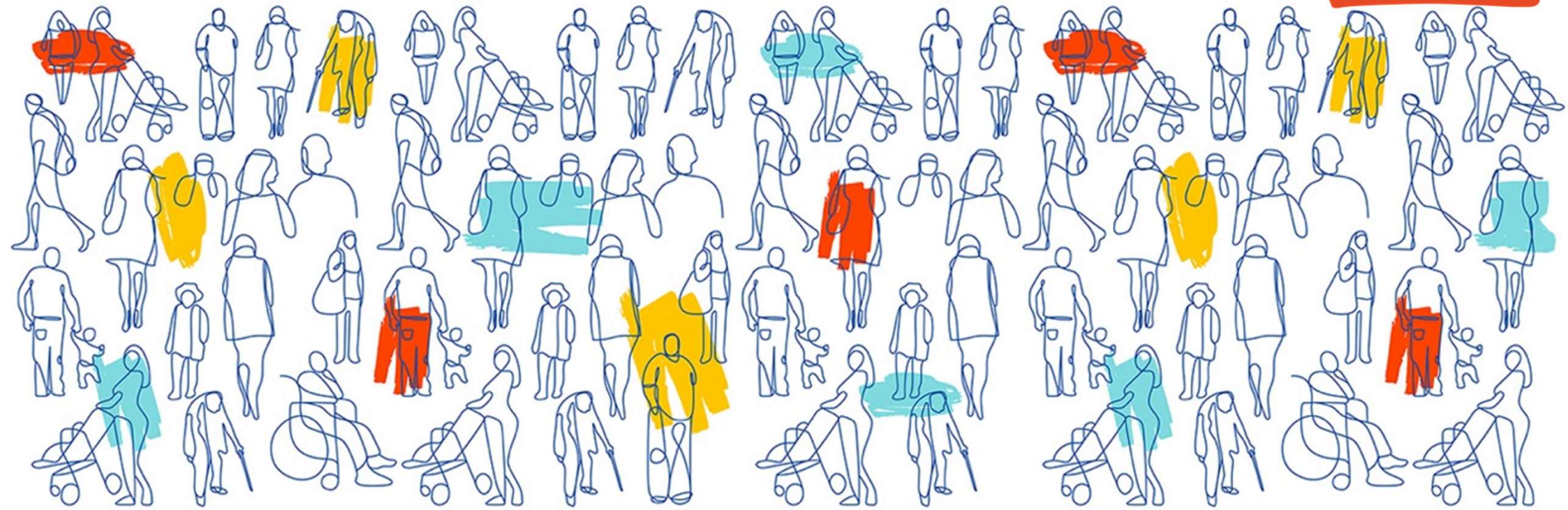




**BREAK**



involve



# Zara Scott - Camden's Climate Resilience Plan



# Camden Climate Resilience Plan (2023-2025)

## Camden Climate Citizen Panel

Zara Scott, Climate Resilience Officer

---

# Climate Resilience Plan Overview

In 2020, Camden's Climate Action Plan committed to delivering Camden's first Climate Resilience Plan by the end of 2023.

*The outcomes of the interim plan will help inform our approach to a combined climate **mitigation**, **adaptation** and **resilience** strategy from 2025-2030.*

The aim of the Climate Resilience Plan is to set out an approach to better prepare, adapt and protect Camden residents, communities, businesses and visitors from the impacts of our changing climate.

Hazards

Vulnerability

Exposure

Current impacts

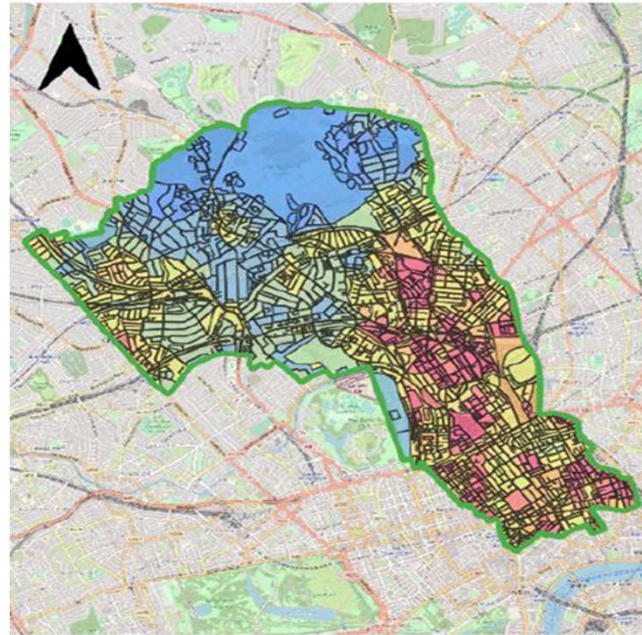
Future impacts

Evidence base

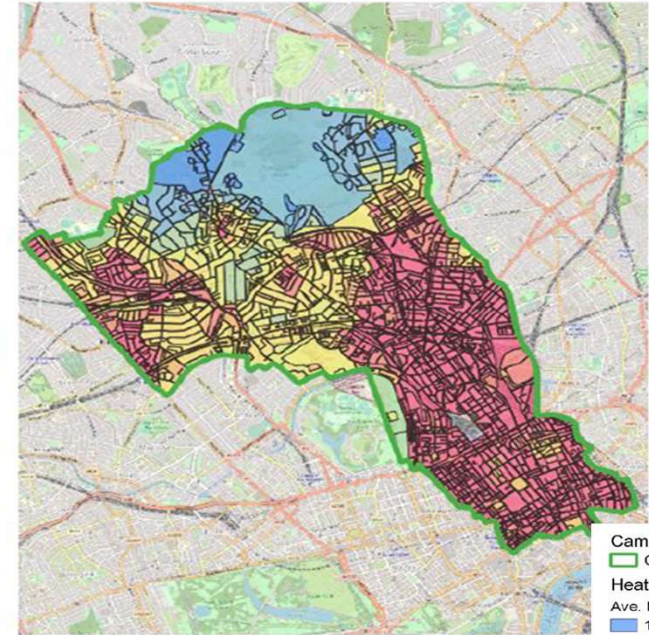
Opportunities

# Climate hazards

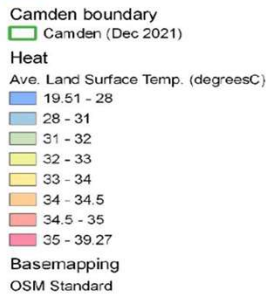
Baseline



Assuming 2oC warming

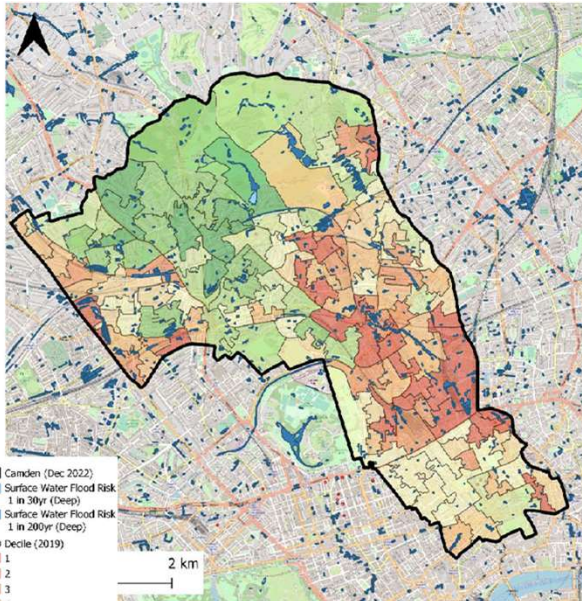


Camden average summer temperatures based on 2°C warming in summer months.

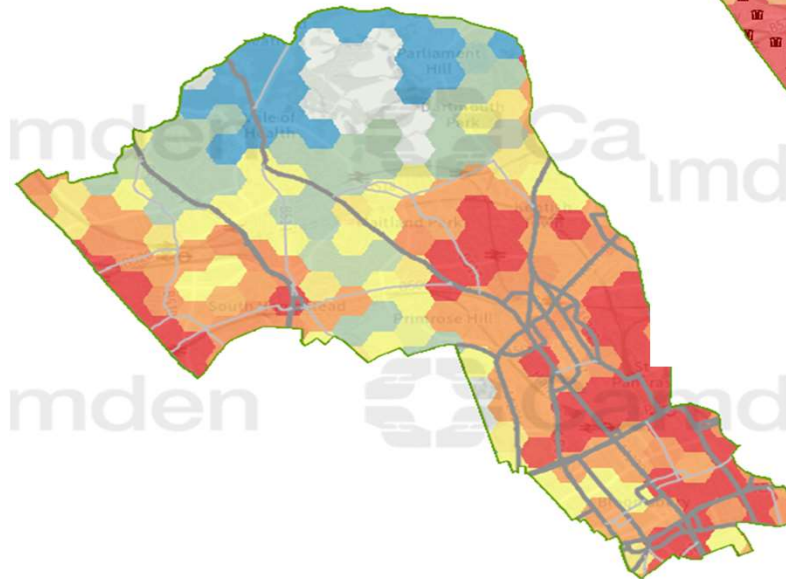


# Vulnerability and exposure to hazards

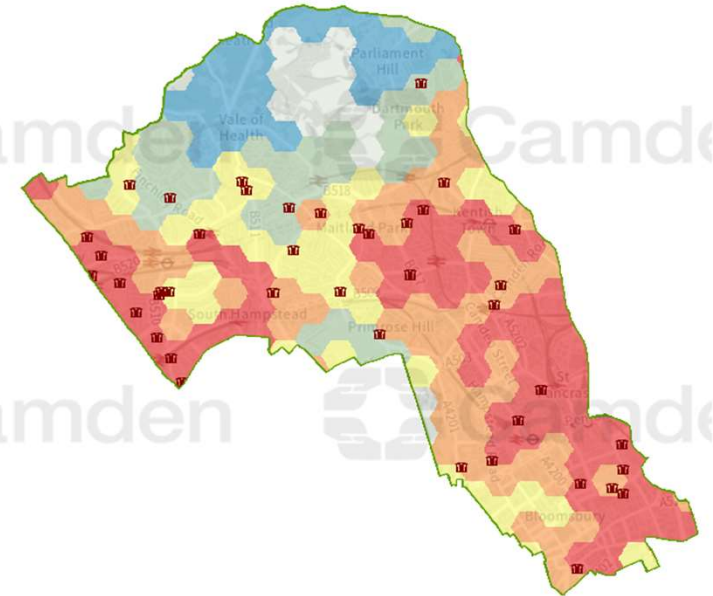
Illustrative map showing deprivation data mapped against climate risk



GLA heat risk mapping overlaid with major roads in Camden



GLA climate risk mapping overlaid with locations of Sheltered Housing in the Camden





# What does resilience look like to you?



Installing water butts

Insulate homes

Depaving gardens



Community cleaning

Community gardens

# What can organisations do?



Improve public spaces

Raise awareness and educate

Install green infrastructure

Improve services

Upgrade infrastructure

Advocate and strengthen policy

# Climate risk methodology

## Hazards

- Flooding
- Overheating
- Drought
- Fires
- Storm

## Vulnerability

- Age
- Ethnicity
- Socio economics
- Disabilities
- Age of infrastructure

## Exposure

- Location of homes
- Location of green space
- Location of services
- Location of infrastructure



# Session Aims

To help us inform the development of the Climate Resilience Plan, we would like to know:

- What you think Camden residents can do to be more resilient to climate events thinking particularly, within your home and your communities.
- What else would you like to see across Camden to better prepare our borough, thinking about how Camden Council, business, community groups, schools and other organisations may be able to help.

Based on what we have discussed, is there anything we have missed which you think should be included in the plan?

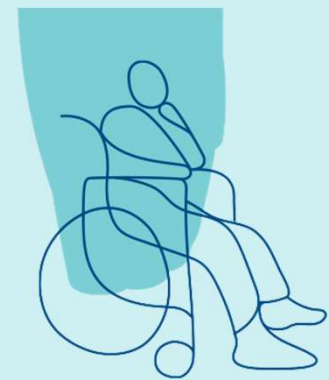


**QUESTIONS?**

# At your tables

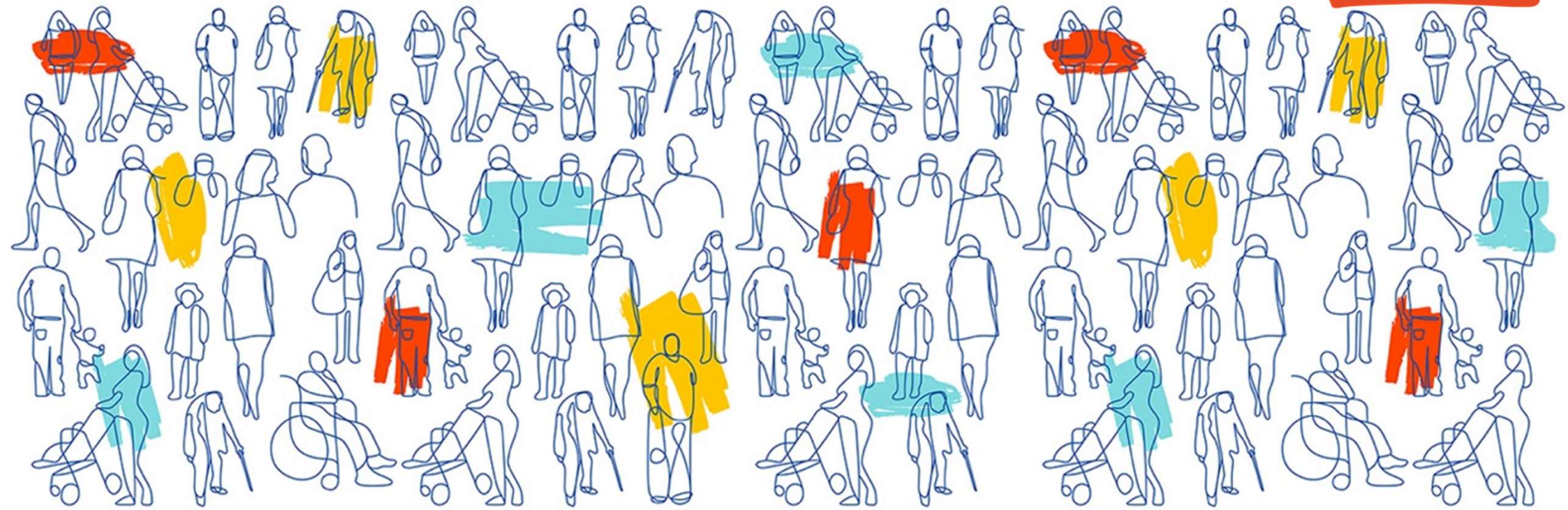
What can Camden residents do to be more resilient to the impacts of climate change?

What should change in the borough to better prepare us for the impacts of climate change?





**involve**



# Climate Resilience Strategy - Communications

# At your tables

How should Camden Council be communicating about climate resilience with the wider Camden community?



# Journey so far

- Connecting as a Panel
- Conversation guidelines
- What is Climate Resilience
- Camden's Climate Resilience Plan
- Your views on what residents and other actors in Camden can do to be more resilient to the impacts of climate change
- Your views on how to communicate about climate resilience



# What happens next?

- Microsite
- Speaking to friends, family and neighbours about what you have learned
- Looking out for our emails
- Getting ready for the next session in November





# Session Dates

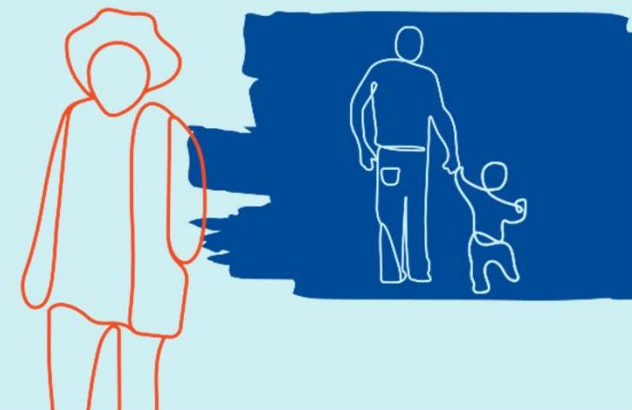
**Session 3 - 6pm - 8:30pm, Tuesday 21st  
November 2023**

Session 4 - Saturday 3rd February 2024

Session 5 - June 2024

Session 6 - November 2024

Session 7 - February 2025



# How to stay in touch

Email us: [climatepanel@involve.org.uk](mailto:climatepanel@involve.org.uk)

Call us and ask for Frances: 020 3745 4334

Visit the Microsite:

<https://sites.google.com/involve.org.uk/camdenclimatepanel/home>

Keep in touch with each other





THANK YOU