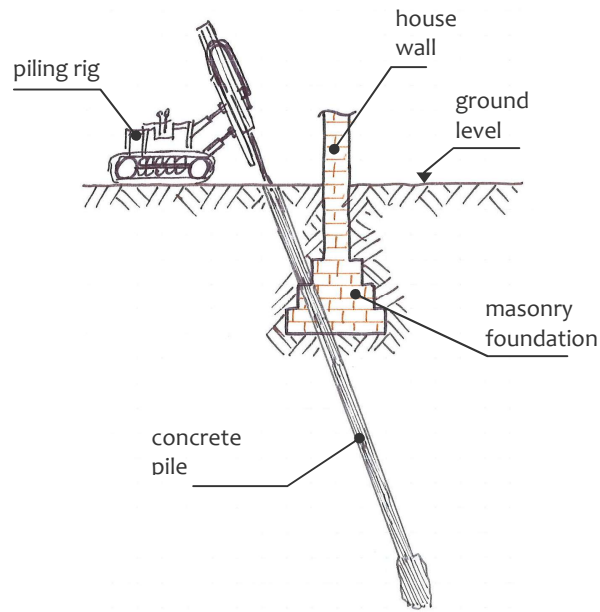
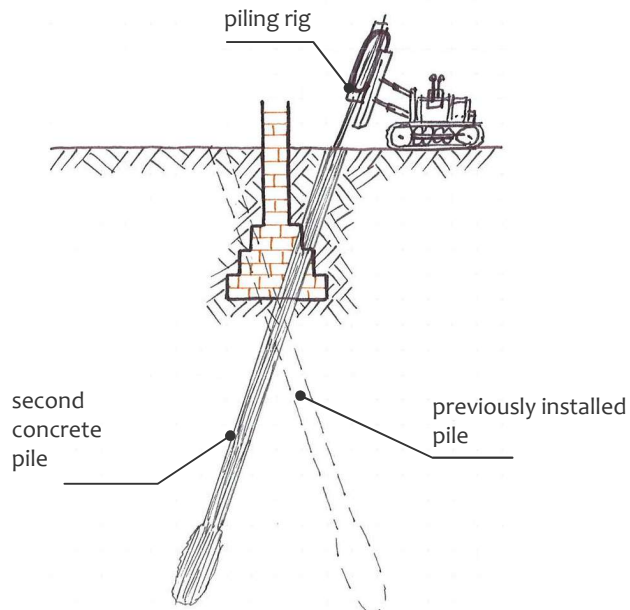


Stage 1: piling on one side



Stage 2: piling on the other side

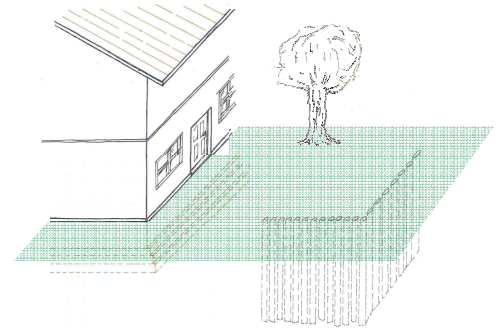
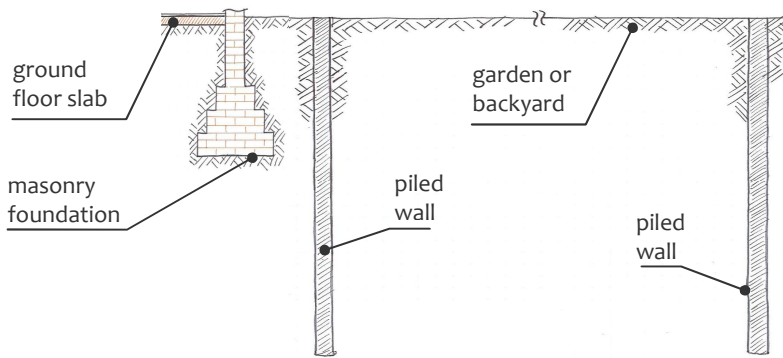


Indicative, schematic sketches only.
Actual dimensions are likely to vary.
Not to scale.

**Camden Geological, Hydrogeological
and Hydrological Study**

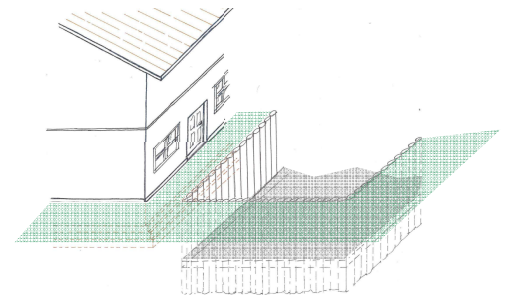
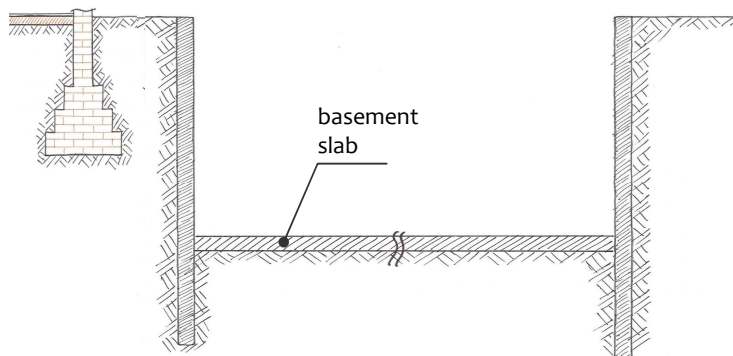
Piles of small diameter (mini-piles) driven through existing foundations

Stage 1: installation of piled walls

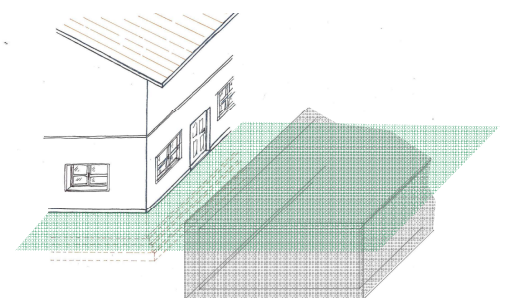
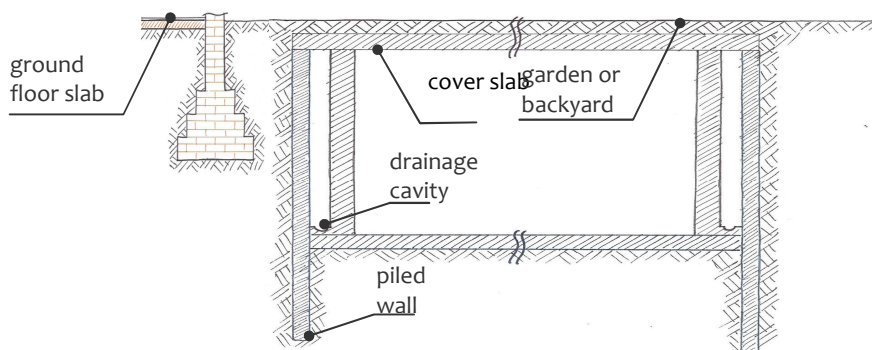


Stage 2: excavation and construction of basement slab

Note: temporary propping support is essential, but is not shown in sketches for clarity



Stage 3: construction of basement walls and cover, before reinstating garden

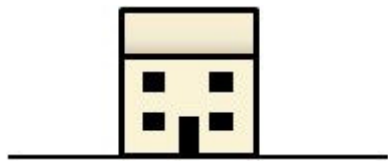


Indicative, schematic sketches only.
Actual dimensions are likely to vary.
Not to scale.

**Camden Geological, Hydrogeological
and Hydrological Study**
“Cut and cover” construction sequence typically
used for garden basements

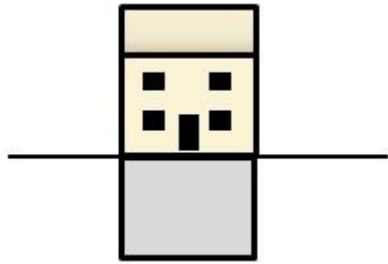
Scenario

A



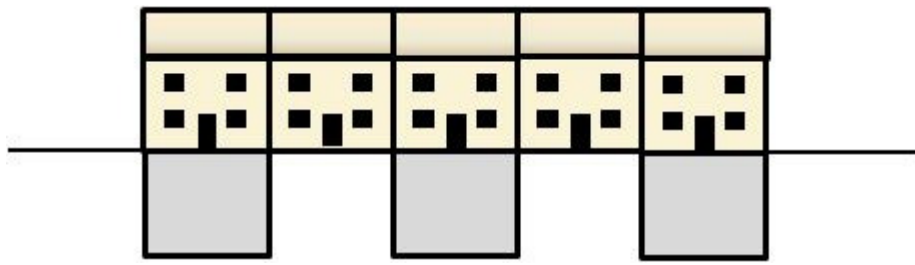
No basement

B



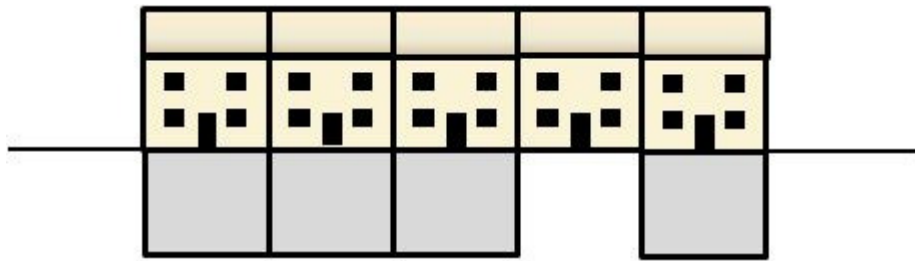
Single basement structure – no adjoining basements

C



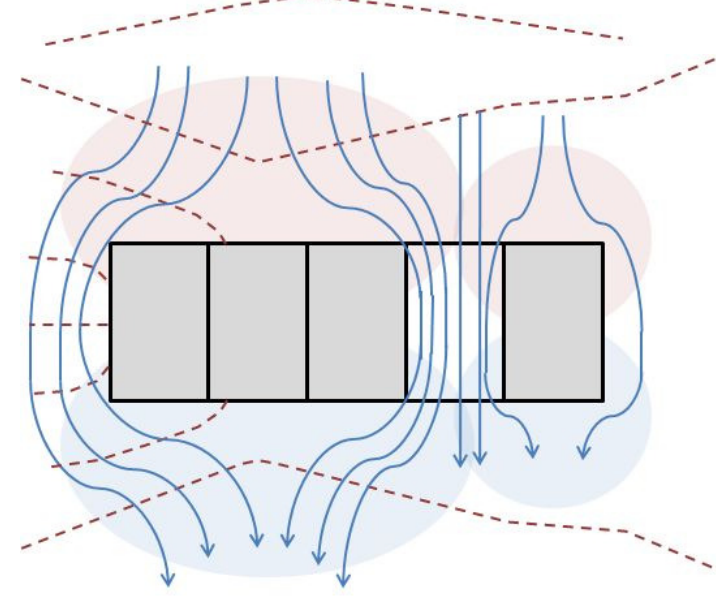
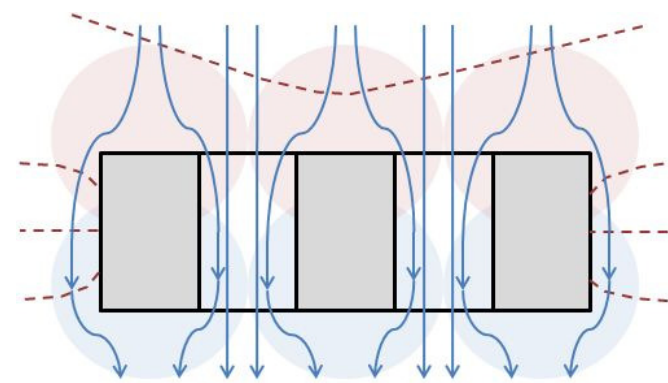
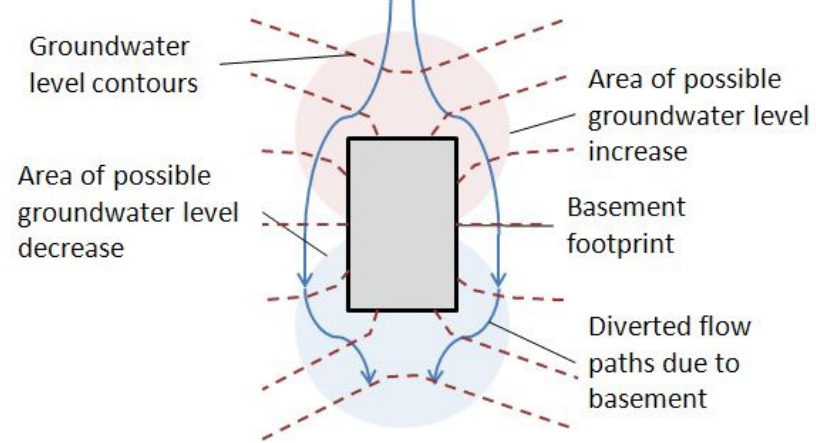
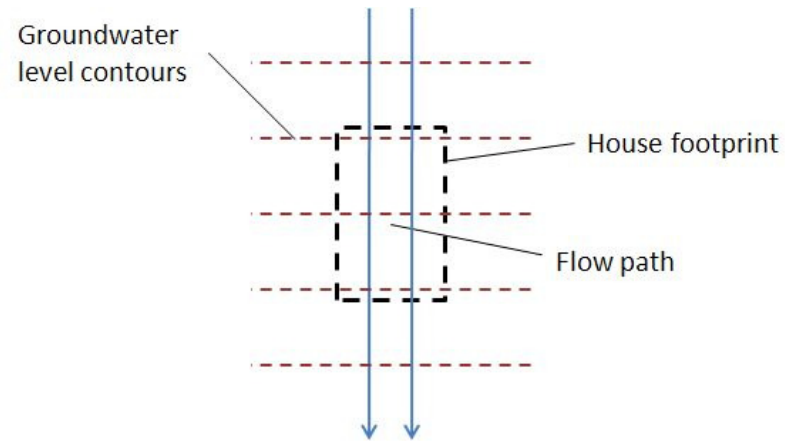
Multiple basement structures – no adjoining basements

D

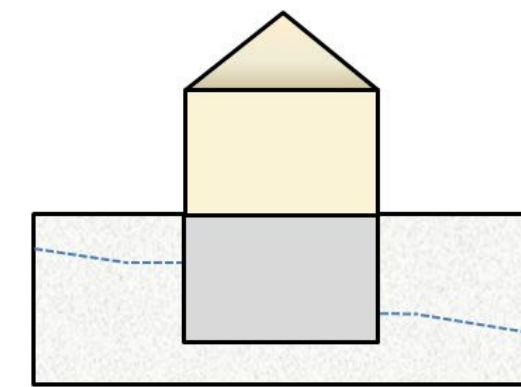
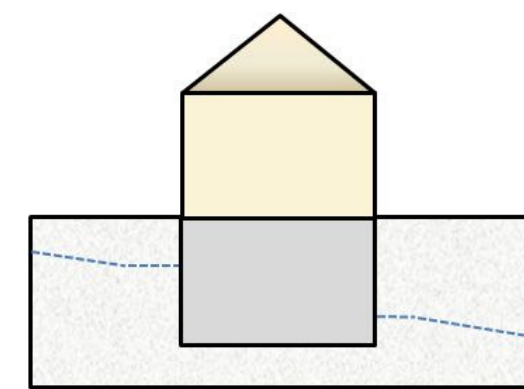
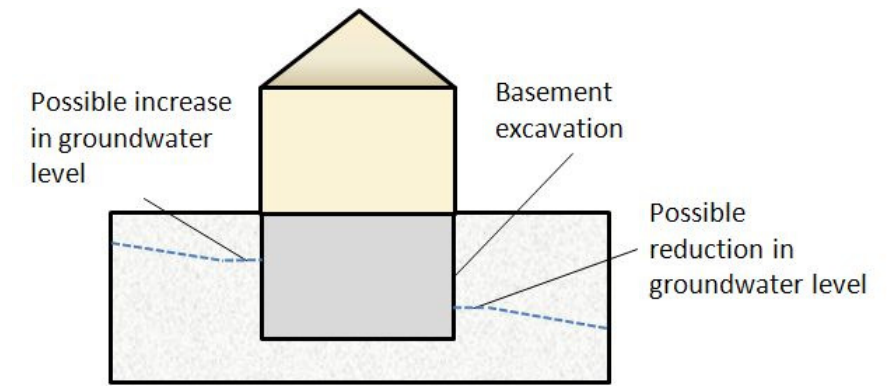
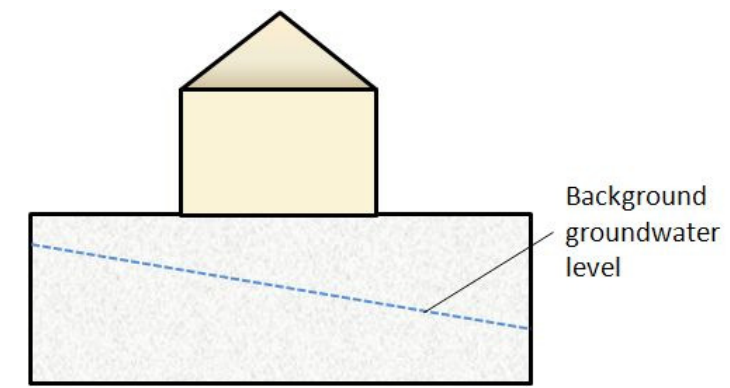


Multiple basement structures – adjoining basements

Plan (from above)

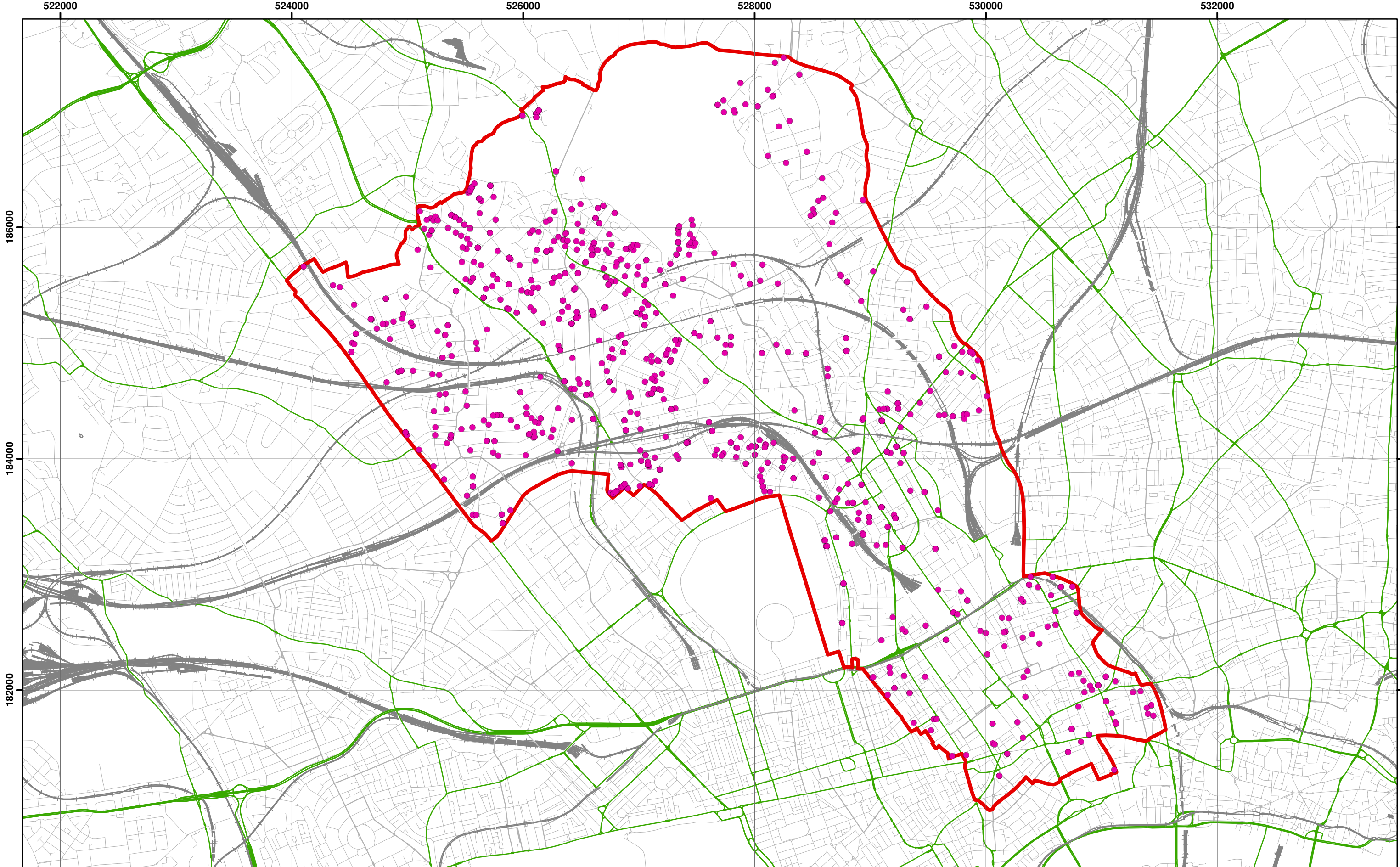


Section (from the side)



Not to scale

Camden Geological, Hydrogeological and Hydrological Study
Illustration of effect of basements on groundwater flow



522000 524000 526000 528000 530000 532000
 Data Source: London Borough of Camden, 2010

Coordinate System:
 British National Grid
 GCS_OSGB_1936

Legend

- London Borough of Camden
- Applications
- Railway Lines
- A Roads



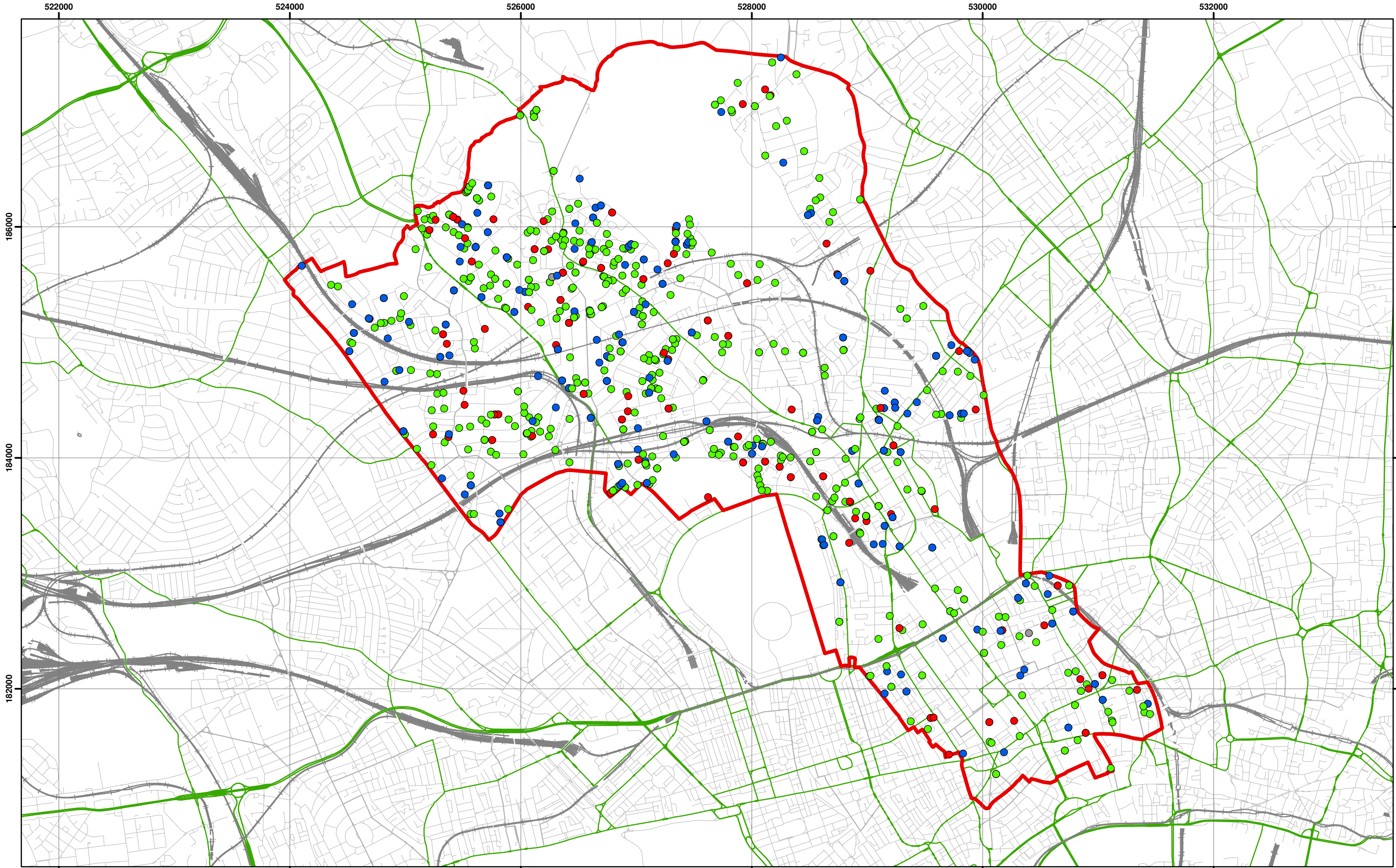
Scale at A3: 1:30,000



**Camden Geological, Hydrogeological
 and Hydrological Study**
 Basement Planning Applications
 (June 2005 - Feb 2010)

213923

FIGURE



Data Source: London Borough of Camden, 2010



Scale at A3: 1:30,000



Coordinate System:
British National Grid
GCS_OSGB_1936

Legend

- London Borough of Camden
- Railway Lines
- A Roads

Application Decision

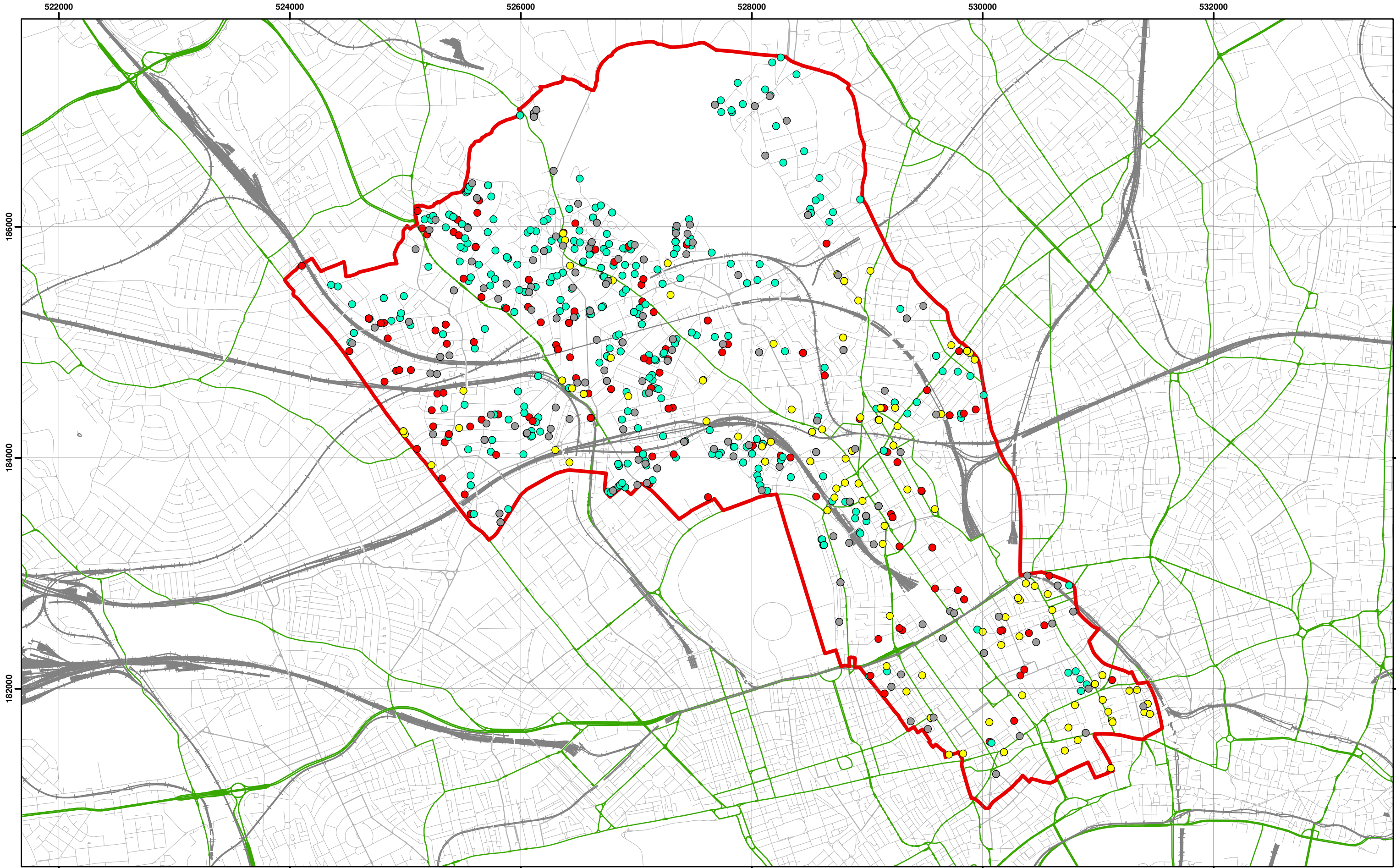
- Granted/Granted subject to s106
- Non Determination
- Refused
- Withdrawn

**Camden Geological, Hydrogeological
and Hydrological Study**
Basement Planning Application Decisions

213923

FIGURE

25



Data Source: London Borough of Camden, 2010



Scale at A3: 1:30,000

Coordinate System:
British National Grid
GCS_OSGB_1936

Legend

- London Borough of Camden
- Railway Lines
- A Roads

Applications by Development Type

- Commercial
- Multiple Dwelling
- Single Dwelling
- Undefined

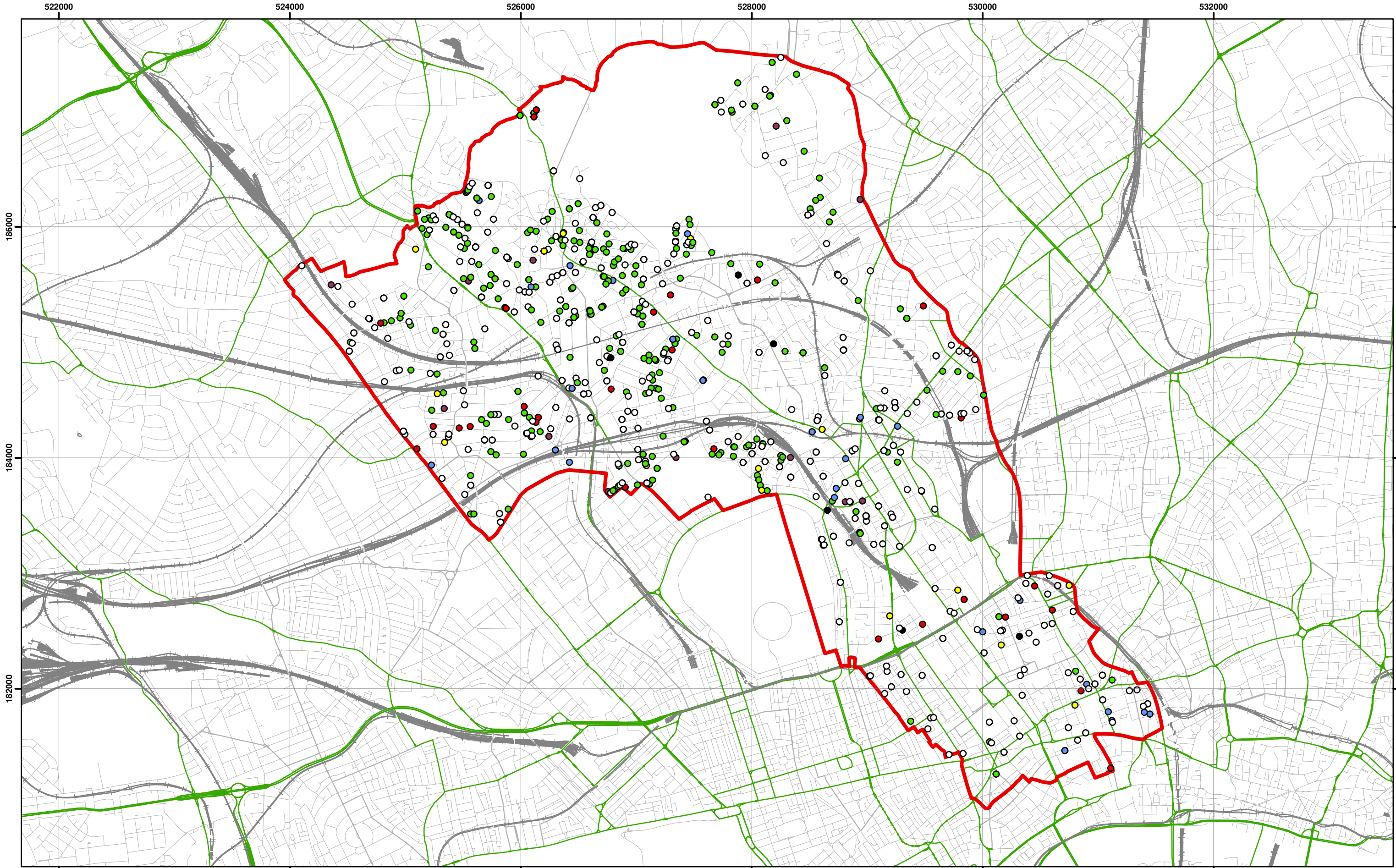
**Camden Geological, Hydrogeological
and Hydrological Study**
Basement Applications by
Development Type

213923

FIGURE

26





Data source - London Borough of Camden, 2010



Scale at A3: 1:30,000

Coordinate System:
British National Grid
GCS_OSGB_1936



Legend

- London Borough of Camden
- Railway Lines
- A Roads

Basements by Use

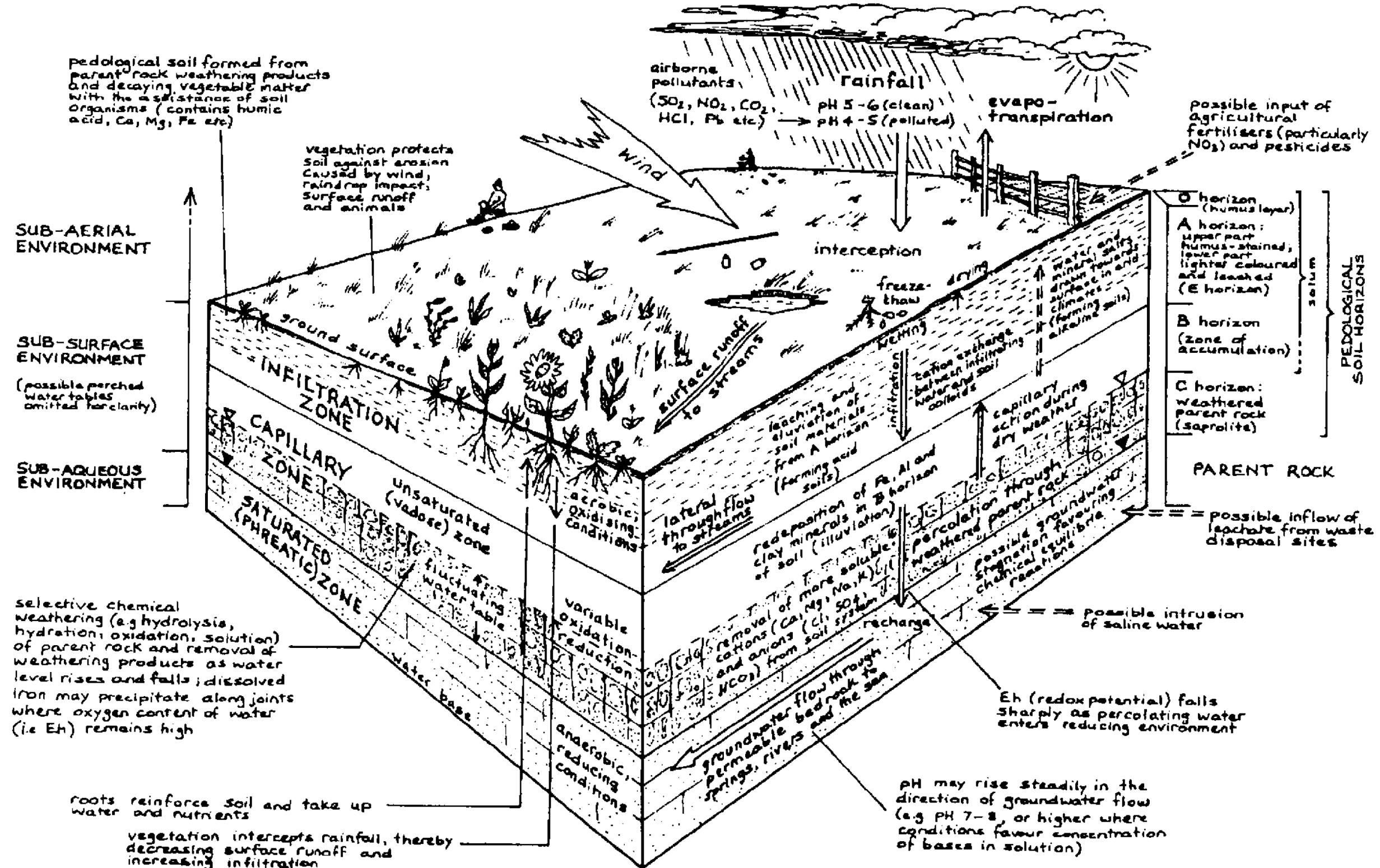
- Living space
- Mixed Use
- Not stated/other
- Office
- Recreation
- Car parking
- Utility rooms/storage

**Camden Geological, Hydrogeological
and Hydrological Study**

Basement applications by primary use

213923

FIGURE **27**



Source – Fookes, 1997 [30]

Camden Geological, Hydrogeological and Hydrological Study
Hydrological conceptual model